

ELIE LAMBERT EQUESTRIAN PAINTER WITH A QUIXOTIC VISION OF THE RACECOURSE

By Theo Woodham Smith



Elie Lambert

He was Born 1949 in Belgium where he paints in a studio apartment in Deauville, overlooking the glamorous racecourse. He calls himself 'le plus Francophile des Belges'.

In a life consecrated to The Horse, licensed 'gentleman rider' at 18, columnist on Paris-Turf and Sporting Life, bloodstock agent for fifteen years, he paints the racing scene in brilliant colours, naivete, and a compulsive sense of fun.

As a young jockey, Elie, sketchbook always at hand, joined the stable of racing grandee the Vicomte d'Hendecourt. Determined to study art, he attended the Academie des Beaux Arts in Brussels, followed by the School for Architecture for three and a half years, though notably a 'restless student.'



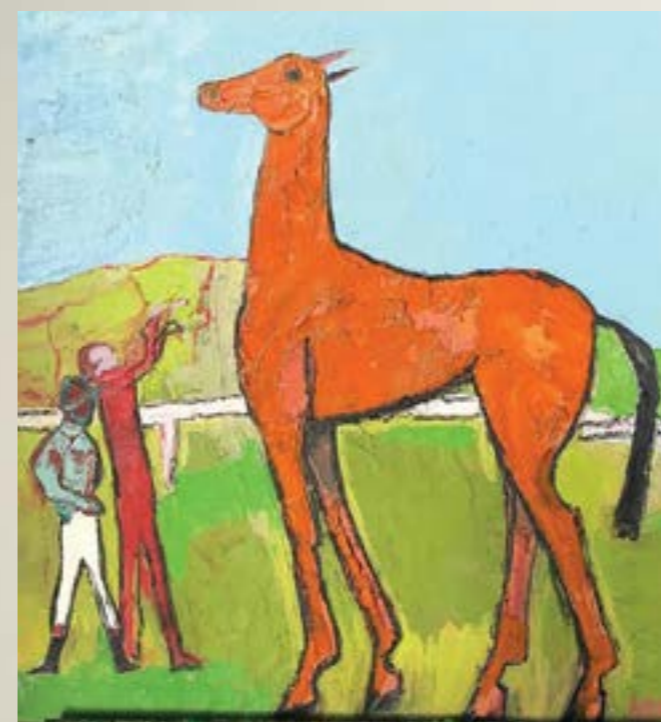


The Osborne Studio Gallery, established in 1986, is London's leading gallery for equestrian art.

Director Geoffrey Hughes, racing enthusiast, connoisseur with an exceptional eye, recognized Elie Lambert's gifts describes his art as 'a thrilling, altogether novel depiction of the Turf'

The gallery has continued to thrive and flourish adapting to lockdown through a series of online and 'virtual' shows. Its Belgravia presence has been kept alive with a constantly changing display of paintings and sculpture in its windows and on line.

The Osborne Studio Gallery, established in 1986, is the only art gallery in Motcomb Street, an elegant thoroughfare of artisan shops and cafes. Director Geoffrey Hughes has an exceptional eye, and an instinctive feeling for the mood of the moment.



FACTBOX

ARTIST: ELIE LAMBERT

DATES: JUNE 14TH TILL JULY 3RD

LOCATION: OSBORNE STUDIO GALLERY

2 MOTCOMB ST, BELGRAVIA

LONDON

SW1X 8JU

ENTRY: FREE ADMISSION TO THE GALLERY

WEBSITE: WWW.OSG.UK.COM